

# Truck Sampler / Core Sampler **PFEUFFER Rakoraf**



model CEE



- correct sampling - no vacuum cleaner effect
- for any flowable products
- well tried and tested
- fair to both buyer and seller
- leading in Europe
- Patented Model



**Rakoraf has been officially tested  
at National Institute of Agricultural  
Engineering Bygholm, DK-8700  
Horsens, Denmark, report no. 758.**

■ **Pfeuffer GmbH**  
Postfach 248  
D-97305 Kitzingen

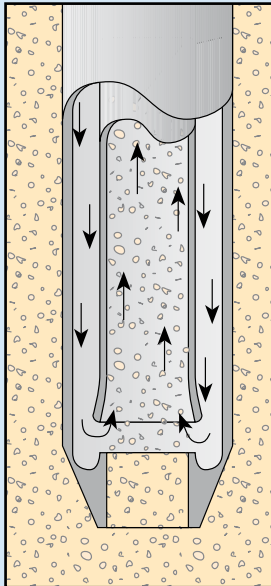
■ **Telefon** (0 93 21) 93 69-0  
**Fax** (0 93 21) 93 69-50  
**Internet** [www.pfeuffer.com](http://www.pfeuffer.com)

**PFEUFFER**  
Mess- und Prüfgeräte

rational kornservice

# Rakoraf

Electro mechanical Sample Taker for correct sampling directly from truck with remote control.



The Rakoraf "Core Sampler" is the fastest and easiest method to take an accurate sample from an open trailer. The sample is taken while the trailer is still on the weighbridge.

The telescopic arm with the core tube can be

extended or retracted, be turned horizontally 0 350 degrees, and can also be raised or lowered vertically. When the core tube is forced downward into the load, the grain, due to the down pressure, is pushed upwards into the inner chamber of the core tube and carried to the receiving chamber located in the weighbridge office via steel and plastic tubing. In the receiving chamber the air is separated from the sample and the clean air is circulated back through the air motor and discharged through the outside chamber of the core tube.

The air circulation system with the patented CONVAC system secures a correct sample eliminating the "vacuum cleaner effect".

Each time the probe is inserted into the load a sample is taken. From a 1 metre load

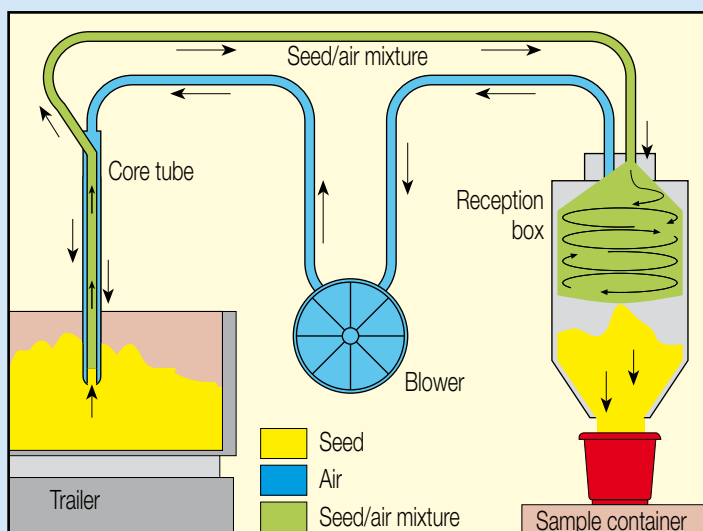
## Rakorafs advantages are many:

- ✓ Give a truly representative sample
- ✓ Complete electrical operation
- ✓ Delivers the sample automatically to the office
- ✓ Single hand operating of both weighbridge and sampler
- ✓ Standard outfit includes hand-held controls, overhead halogen floodlights for night time operation and signal horn
- ✓ All moving parts are mounted in polyethylene or nylatron (lubricant free)
- ✓ Minimal maintenance and only 4 lubricating points (Ball bearings)

a 500 gram sample is taken, if the load is 2 metre the sample is 1000 gram. Sample size is independent of the time the probe is inserted in the load. Only the material (grain) that is forced into the tube is taken as the sample.

The sample is taken right to the bottom of the material layer, a factor especially significant when sampling peas, where smaller impurities settle at the bottom.

When the core sampler is stopped, the samples is automatically emptied out from the receiving chamber. Should the driver by mistake drive away before the sampler is taken out of the load, the sampler is equipped with a break away hinge will give with the motion so no damage is done to the sampler or trailer.

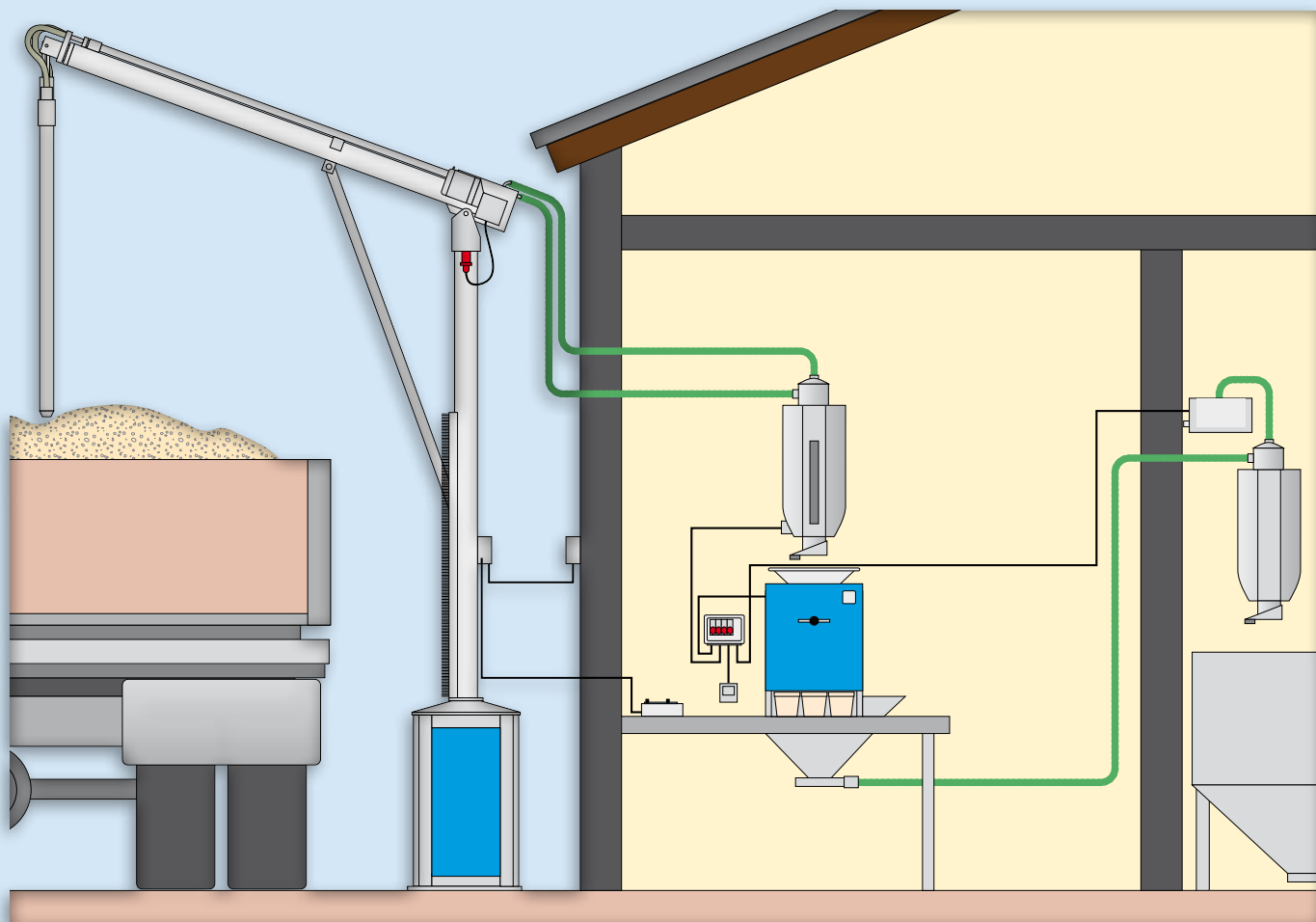


## Controls

The compact handheld joystick which has all moving functions in one handle can activate up to 3 moving functions at the same time. The joystick speeds up the operation and it is possible to take 5 samples in 40 seconds.

The joystick is connected to the sampler with a single multipug and if required you can replace your old type push button unit very simply.

Push button for working lamp and horn.



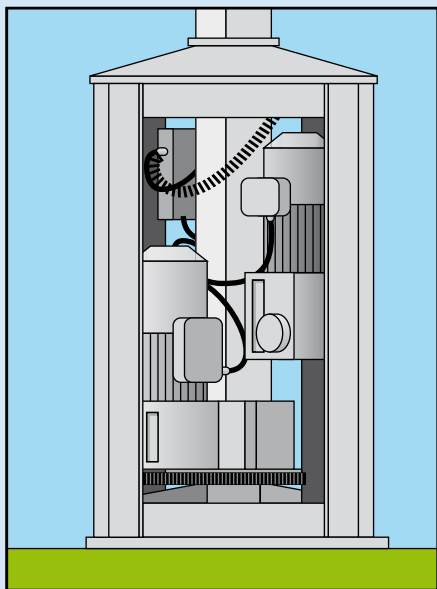
## Options

For further automation we can supply variable sample dividers (1) delivering 1, 2 or 4 samples. The divider is placed under the receiving chamber. The next step is to have pneumatic removal of rejects and used samples (2).

The divider and the pneumatic transport are turned on automatically (3) when the sample leaves the receiving chamber.

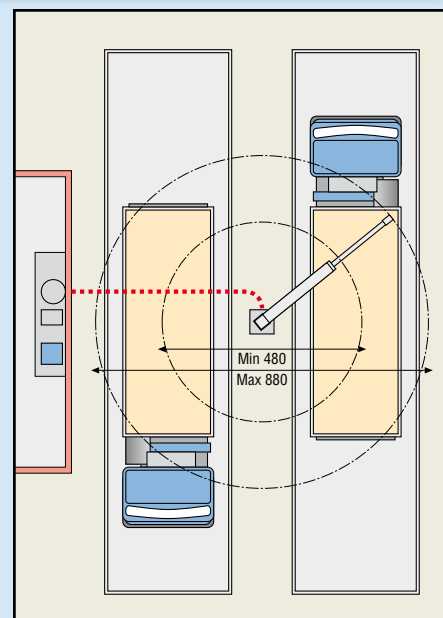
## Mounting slab

The electrical panel and gearmotors are easily accessible and are well protected against the weather.



## Standard delivery

Joystick with 5 metre cable and multiplug, complete internal wiring, automatic fuses, motorprotectors, electrical safety device to stop the probe both in the load and when in top position, 300 w halogen flood light, signalhorn, mechanical friction hubs (torque limiters) for in/out and swinging movement. Bolt frame for concrete base, receiving chamber and 2,1 metre probe. Connection 3 x 380 volt or 3 x 220 volt, 50 HZ, 10 amp.



## Placement

The sample taker is free standing and is designed for mounting onto a concrete base or mobile foundation. The positioning must be adapted according to the local condition. The rotation is adjustable up to 350°.

## Probe length:

Standard: .....210 cm  
Special delivery: .....230 cm  
250 cm  
300 cm

## Specifications CEE:

Connection: .....400 Volt, 50 Hz  
Motor sizes:  
Up down: .....0,55 Kw  
Telescopic arm: .....0,37 Kw  
Turning: .....0,25 Kw  
Ventilator: .....1,20 Kw

Shipping weight: .....app. 475 Kg

## Specifications CHE:

Connection: .....400 Volt, 50 Hz  
Motor sizes:  
Up down: .....0,75 Kw  
Telescopic arm: .....0,37 Kw  
Turning: .....0,25 Kw  
Ventilator: .....1,20 Kw

Shipping weight: .....app. 475 Kg

## Specifications CHF:

Connection: .....400 Volt, 50 Hz  
Motor sizes:  
Up down: .....0,75 Kw  
Turning: .....0,25 Kw  
Ventilator: .....1,20 Kw

Shipping weight: .....app. 450 Kg

## Model CHE and CHF

RAKORAF Model CHE and CHF are two models based on our thoroughly tested CEE standard model.

Up/down movements are hydraulic while the rotation is electromechanical.

All functions are controlled by a joystick.

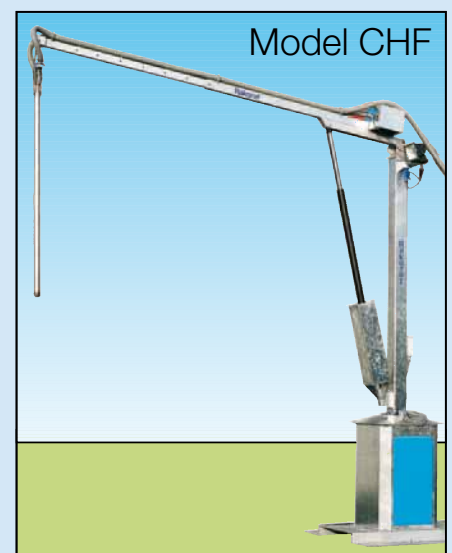
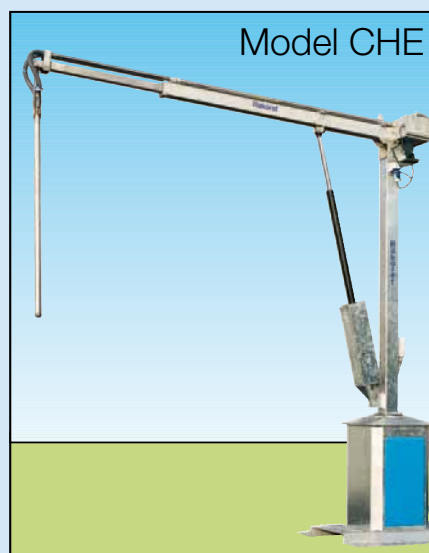
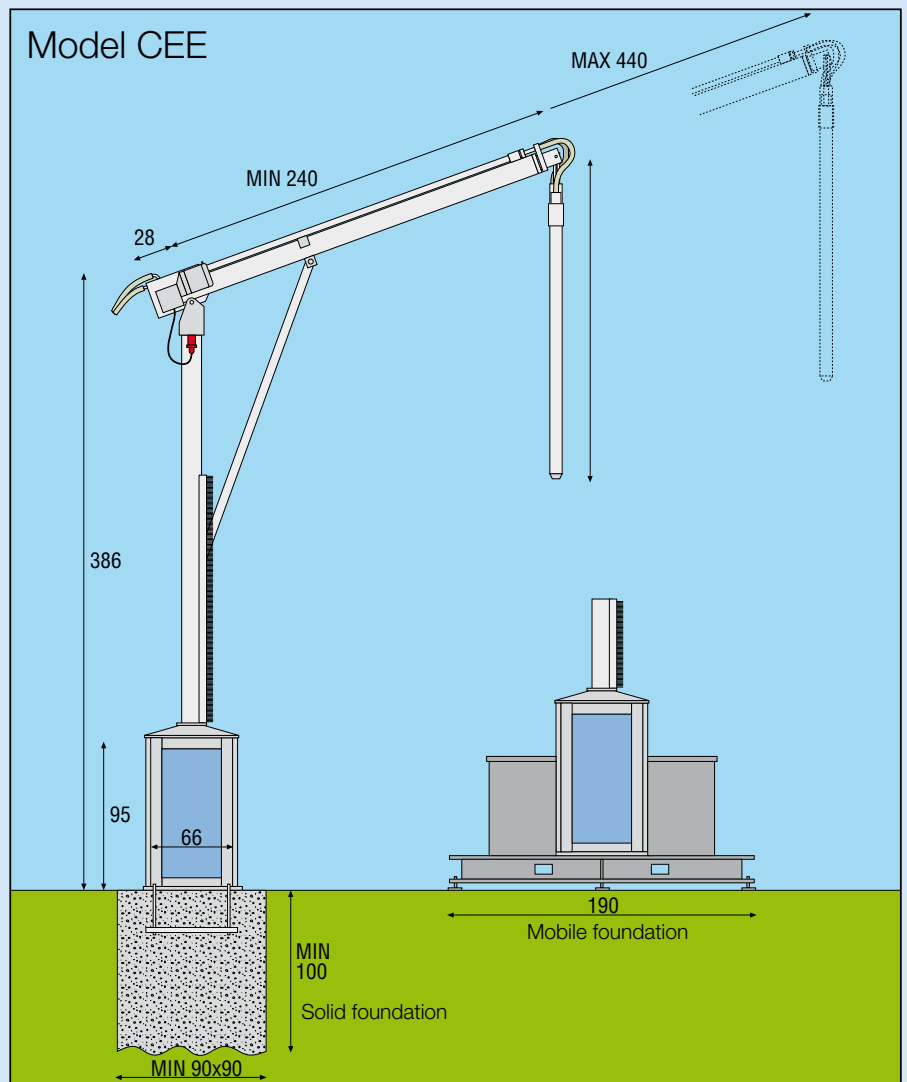
### Model CHE

Has an electromechanical telescopic arm

### Model CHF

Has a fixed length arm.

Length can vary between 2,26 and 3,44 metres. Suitable length to be selected at time of mounting.



■ **Pfeuffer GmbH**  
Flugplatzstraße 70  
D-97318 Kitzingen

■ **Telefon** (0 93 21) 93 69-0  
**Fax** (0 93 21) 93 69-50  
**e-mail** [info@pfeuffer.com](mailto:info@pfeuffer.com)

**PFEUFFER**  
Mess- und Prüfgeräte

rational kornservice